

MAVRIX

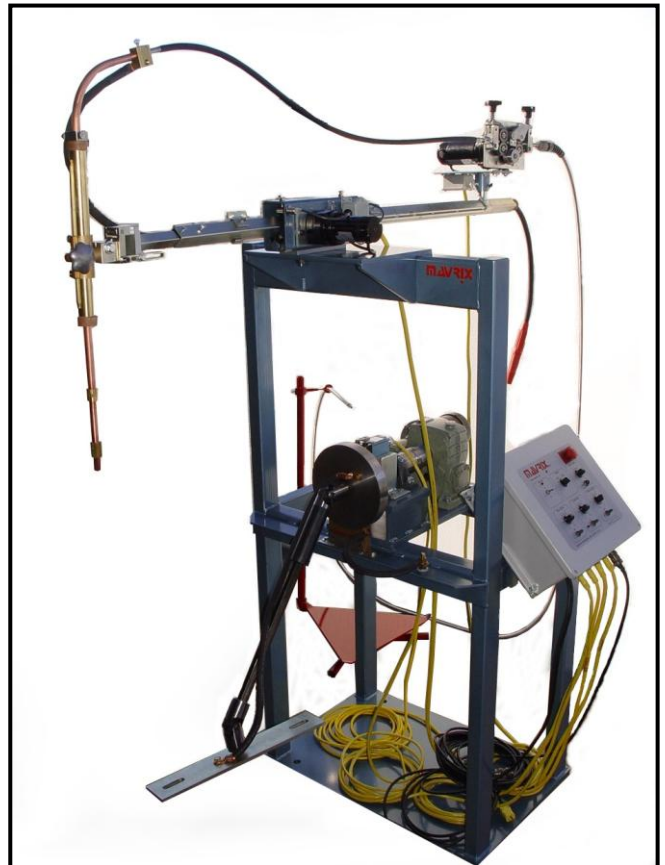
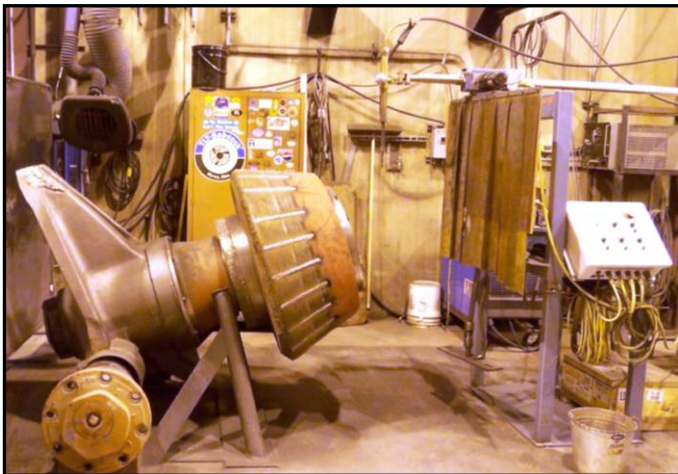
Welding Automation Inc.

Welding Automation Inc.

COAL PULVERIZER ROLL REBUILD SYSTEM

Our coal pulverizer system for resurfacing rolls comes in many variations. These variations are altered to fit each customer and in most cases are modified to fit how they fixture the rolls. We can build a system that will turn the roll or we can integrate with your motor/gear box into the Mavrix control.

- Easily adjustable travel limits
- Weld in circumferential mode or strip mode
- Use to fill in break out sections
- Comes complete with 10 inch travel adjustable nozzle
- Includes our standard PA-10 4 roll constant speed wire feeder with forward and reverse inching and dynamic braking to eliminate wire coasting
- Includes either motor/gearbox drive shaft or control of remote mounted motor/gearbox
- Includes rotary ground on the stand or mounted on the roll
- Mavrix Roll-O-Matic 125 controller
- Autopak wire dispensing option



FOR MORE INFORMATION, PLEASE CALL, WRITE or EMAIL

MAVRIX AUTOMATIC WELDING

mavrixweld@ameritech.net www.mavrixweld.com

W182 S8363 RACINE AVENUE * MUSKEGO, WI. 53150 * (262) 679-3800 * FAX (262)679-3060

Most of the roll rebuild systems utilize the Roll-O-Matic 125 control. This is a robust circuit board based system that is easy to learn and provides the base functionality.

Included with this control is a contactor cord that will provide remote control of your welding supply. An option is available to provide a weld voltage control and a meter.



Designs shown have been sold!

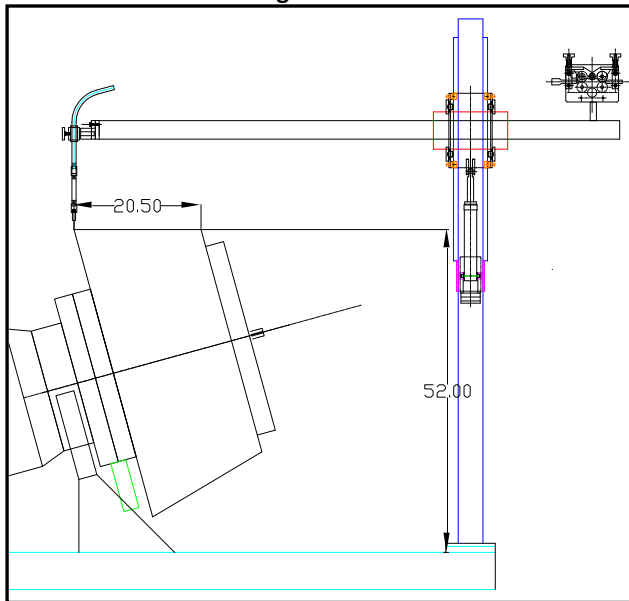
Design #1

This was a vertical post system that we designed to directly mount to the customer's current roll turning fixture. Our control ran the customer's motor/gearbox and also integrated their current trip switch. This system provided them a long reach and on the fly vertical adjustment.

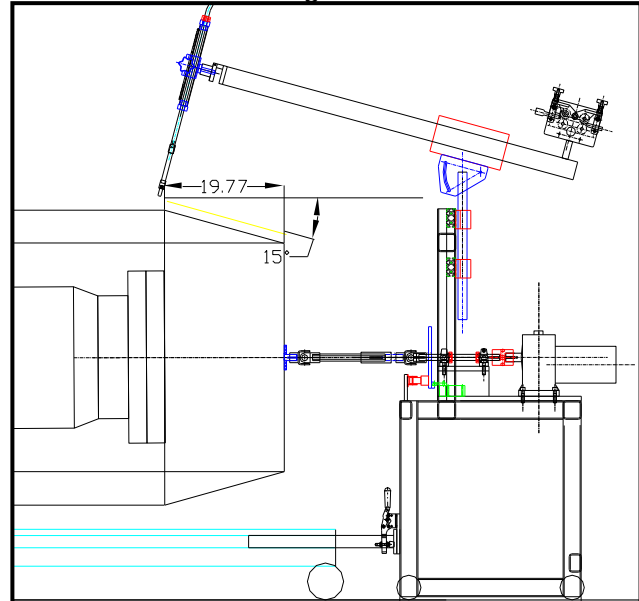
Design #2

This was a spin off version of the system shown above. In this case the custom fixture didn't present the welding surface horizontal so we built them the flexibility they needed to adapt the torch angle to the roll surface. A complete self contained cart allowed them to bring the roll under a hood using a fork lift. Our cart attaches to the roll cart and clamps together. Drive motor, ground, step switch are all contained and operated by a single control box. The box is mounted on a stand with 20 ft. of cable to keep the operator safely out of the welding zone.

Design #1



Design #2



Mavrix recommends the use of Stoody wire consumables such as 100HD or CP2000 for overlaying rolls and tables. For additional information on these wires and their application, please visit www.stoody.com.

FOR MORE INFORMATION, PLEASE CALL, WRITE or EMAIL

MAVRIX AUTOMATIC WELDING

mavrixweld@ameritech.net www.mavrixweld.com

W182 S8363 RACINE AVENUE * MUSKEGO, WI. 53150 * (262) 679-3800 * FAX (262)679-3060