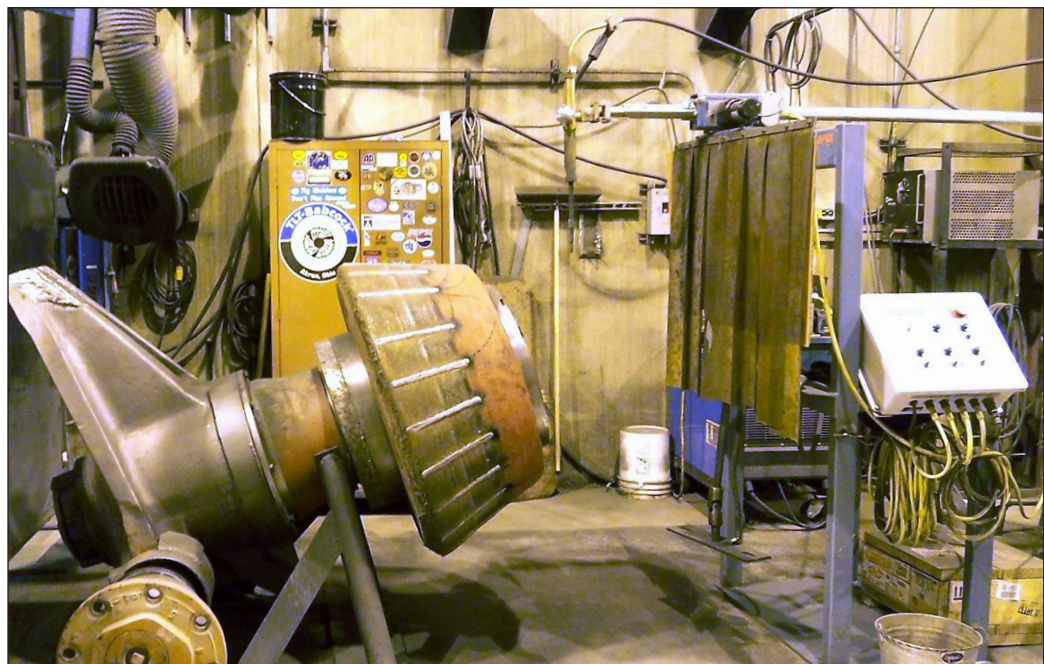
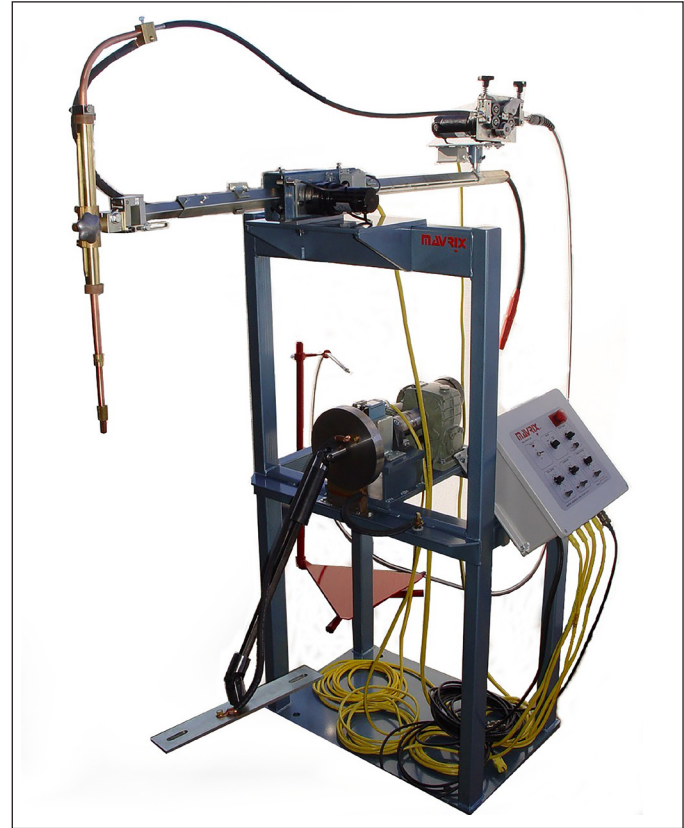


# POWER GENERATION

Coal pulverizer systems for resurfacing rolls comes in many variations. These variations are fully customizable for any application. Mavrix can build a system that will turn the roll or can be integrated with your motor & gearbox.

## FREE STANDING ROLL RESURFACING SYSTEM

- Easily adjustable travel limits
- Weld in circumferential mode or strip mode
- Use to fill in break out sections
- Includes a 10 inch travel fully insulated adjustable weld nozzle
- Includes the PA-10 (4) roll constant speed wire feeder with forward and reverse inching and dynamic braking to eliminate wire coasting
- Includes either motor/gearbox drive shaft or control of remote mounted motor/gearbox
- Includes rotary ground on the stand or mounted on the roll
- Mavrix Roll-O-Matic 125 controller (shown) or optional 130 controller with operator pendant
- Autopak wire dispensing for pulling wire from drums



# POWER GENERATION



## COAL PULVERIZER TABLES

- Automatically rebuilds pulverizer table in place
- Dual torch system capable of up to 50 to 60 lbs. per hour
- Operators are remote from welding arc assuring the highest level of safety
- Designed for quick and easy setup
- System can be sold as a double torch (as shown) or a single
- Unit can be configured to weld curved bowl table typical of MPS design

## PULVERIZER TABLE REBUILD SYSTEM COMPONENTS

**TWO WELD ARM MANIPULATORS – (single arm available)**  
Structural steel weld arms with rack and pinion drive.

### SUPPORT SYSTEM

A lightweight 3" x 6" aluminum extrusion beam is mounted across the opened pulverizer door.

### GROUNDING DEVICE

A 1500 AMP rotary ground device is included and installed by the customer to the table center.

### WIRE FEED ASSEMBLIES

The PA-10 (4) roll wire feeder is included with our Auto-Pak turntable.

### OPERATING CONTROL

Two identical operating controls are supplied, one for each manipulator. An interconnect cable is used to provide the trip switch signal to both controls for dual arm systems.

### STEP-OVER SWITCH

This switch is used to signal the weld arm carriage motors to step after each revolution of the table.

### TABLE ROTATION DEVICE

A gearmotor with sprockets and chain are included.

### WELD POWER SUPPLIES AND CABLING

Optional

### TORCH ADJUSTORS

A torch adjustor will provide + 5 inches up and down motion.

### Optional Z motion

Provides remote torch height adjustment.